



Standard PolyDrain – 2513AF

Precast Trench Drain 4" ID w Commercial Airport/Port Ductile Iron Frame and Grate Standard Specification

System ID#: PD 2513AF

Trench drain shall be PolyDrain; manufactured by ABT, Inc., 259 Murdock Road, Troutman, NC - (800) 438-6057.
www.abtdrains.com

System Components:

Precast Trench Drain - The precast trench shall be manufactured using polyester polymer concrete with the following material properties when tested:

Property ASTM	Test Method	Value
Compressive Strength	ASTM C579	17,000 psi Minimum
Bending Strength	ASTM C580	4,000 psi Minimum
Tensile Strength	ASTM C307	2,000 psi Minimum
Moisture Absorption	ASTM C140	0.2% Maximum
Chemical Resistance	ASTM C267	Pass
Freeze/Thaw w/o weight loss	ASTM C666	1,600 Number of Cycles Minimum
Resistance to Fungi	ASTM G21	Zero (0) Rating Mold Growth
UL/ULC Listed- Flame Spread	UL-723	Class A

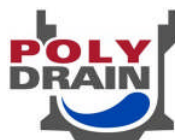
The trench consisting of 39.19" (1 meter) or 19.56" (1/2 meter) channels with nominal 6" (155mm) outside width, 4" (100mm) inside width. Pre-sloped channels shall have a standard slope of 0.6% with radius bottom. Non-sloping channels must have written approval by engineer prior to installation. Channels shall have tongue and groove joints. Grate lock down slots shall have polyethylene vibration dampening inserts. All channels must have full length anchoring ribs for a positive mechanical lock with the surrounding concrete.

Sidewall Extensions – Sidewall extensions for channels may be used for hydraulic performance or to maintain the standard slope of 0.6% in greater trench run lengths. Sidewall extensions shall be composed of similar material and thickness as the channels and shall have tongue and groove joints.

Frame & Grate: #2513AF: Epoxy coated ductile iron conforming to ASTM A-536 with a minimum of 0.21Ft² /L Ft (.064m²/Lm) open area. Grates shall meet a minimum 2469 psi proof load per AASHTO M-306 test modified by utilizing a 9" x 3" load plate. Frames shall be a minimum of .188" (4.77mm) thick. The frames shall have .25" dia. x 3" long (minimum) anchors spaced no more than 17" (431.8mm) on center. Frames shall be independent of the channels. Frames and grates shall seat into channels without rocking and shall be locked to the channel using a zinc plated steel 5/16 – 18 UNC bolt and zinc plated steel toggle bar system with a bolt torque of 10in/lb. Frames and grates shall be made in U.S.A., and shall conform to the FHWA's "Buy America" policy 23 CFR 635.410(b) and Federal Acquisitions Regulations (FAR) 52.225 "Buy American Act".

Quality Assurance:

Submittals: A Certificate of Compliance in conformance with the provisions of these Standard Specifications shall be furnished to the Engineer. Grates shall be independently tested to AASHTO M-306.



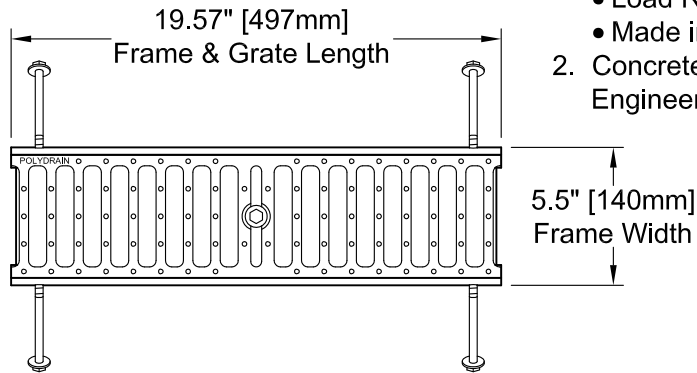
Plan Notes

Series Number: PD-2513AF

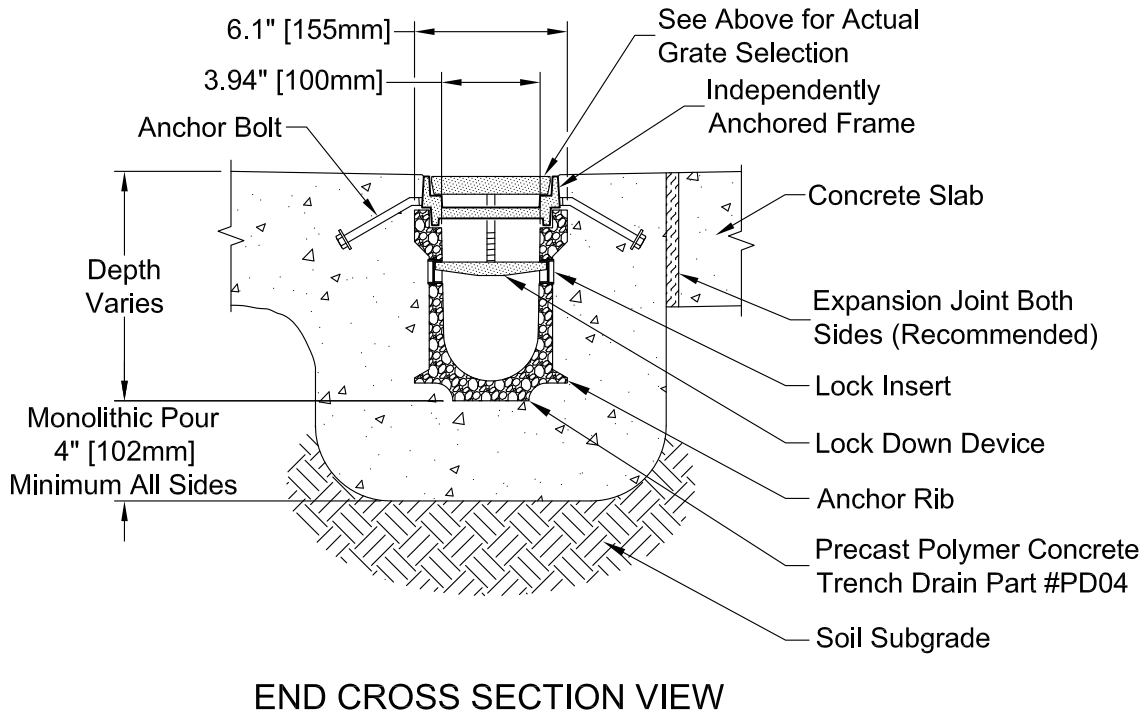
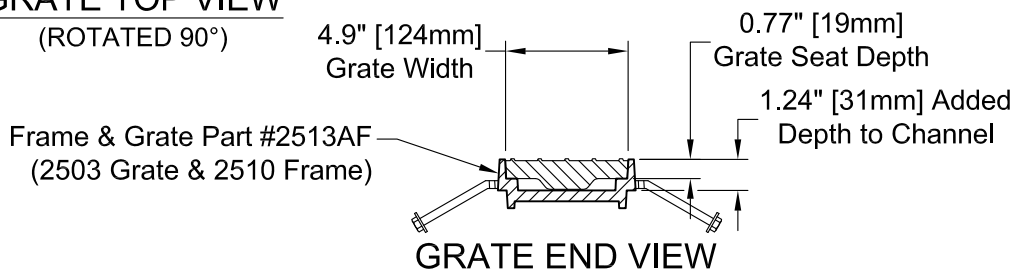
1. Grate & Frame:

- Ductile Iron per ASTM A536 Grade 80-55-06 (Epoxy Coated)
- Open Area: 0.21 FT² per Lineal Foot [0.064 M² per Lineal Meter]
- Load Rating: 2469 PSI (AASHTO M-306 Test Method)
- Made in the USA

2. Concrete: Concrete Thickness and Reinforcement per Structural Engineer's Specification for the Application.



GRATE TOP VIEW
(ROTATED 90°)



END CROSS SECTION VIEW

Copyright © 2010 ABT, Inc.

ABT, INC.
P.O. BOX 837, 259 MURDOCK ROAD
TROUTMAN, NC 28166
(704) 528-9806

**PolyDrain - 4" [100mm] ID Precast Trench Drain
with Commercial Airport/Port Ductile Iron Frame & Grate**

SERIES:

PD-2513AF

REV: **00**

Proprietary rights of ABT, Inc. are included in the information disclosed herein. The recipient, by accepting this document, agrees that neither this document nor the information disclosed herein nor any part thereof shall be copied, reproduced or transferred to others for manufacturing or for any other purpose except as specifically authorized in writing by ABT, Inc.

DISCLAIMER: The customer and the customer's architects, engineers, consultants and other professionals are completely responsible for the selection, installation, and maintenance of any product purchased from ABT, and EXCEPT AS EXPRESSLY PROVIDED IN ABT'S STANDARD WARRANTIES, ABT MAKES NO WARRANTY, EXPRESS OR IMPLIED, AS TO THE SUITABILITY, DESIGN, MERCHANTABILITY, OR FITNESS OF THE PRODUCT FOR CUSTOMER'S APPLICATION. Copies of ABT's standard warranties are available upon request.